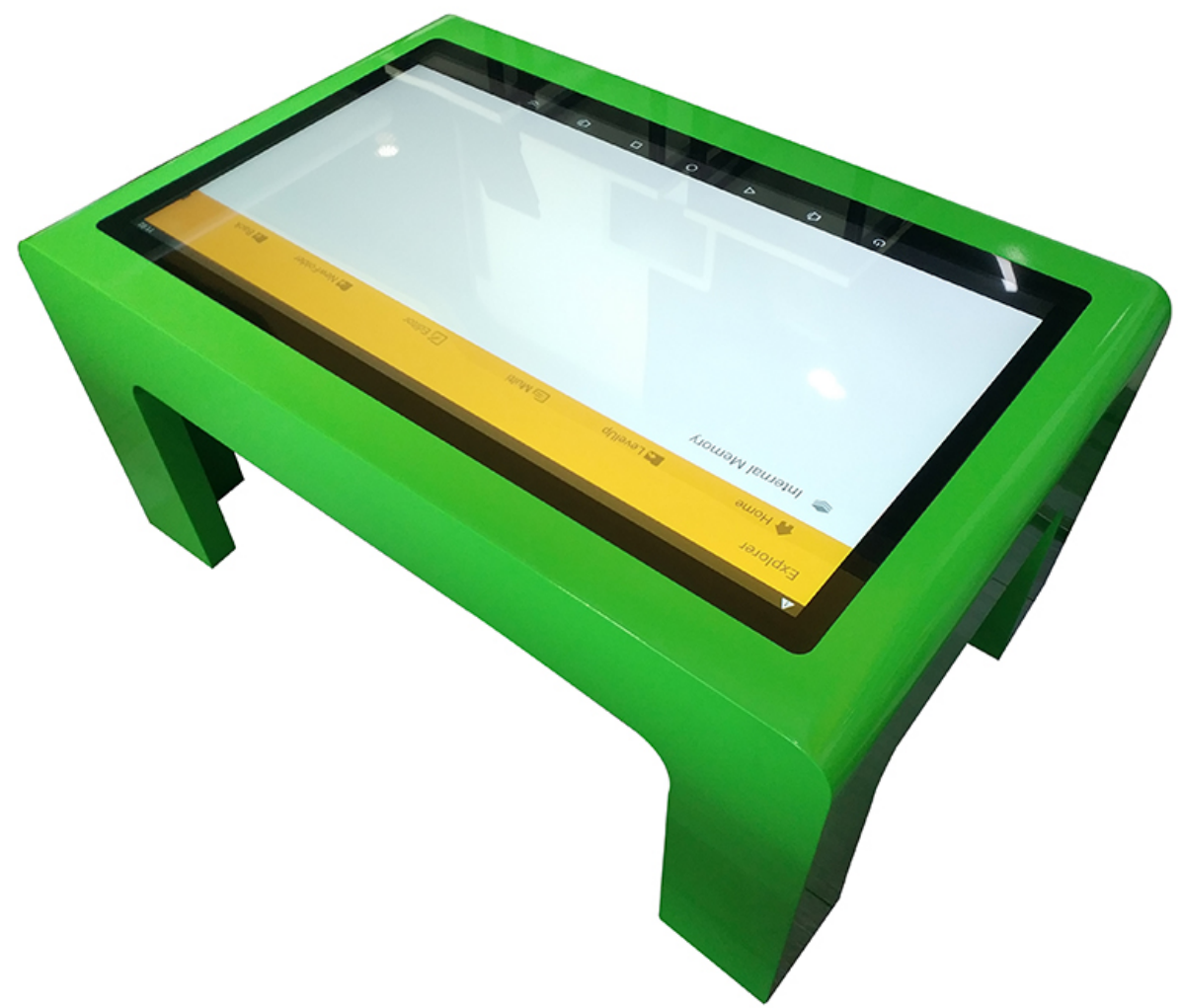


Highlights

- 1920*1080, Full-HD resolution
- 350nits brightness for excellent visual effects
- Convenient interface: LVDS
- With PCAP touch screen, 10 point, meet interactive display integration
- With NFC or IC card reader optional
- With safety lock and Tempered glass
- High sensitivity; Fast reaction speed
- Streamline fashion design with good appearance
- Big built-in speaker, good quality and sound good enough
- Yellow, green, blue etc color support



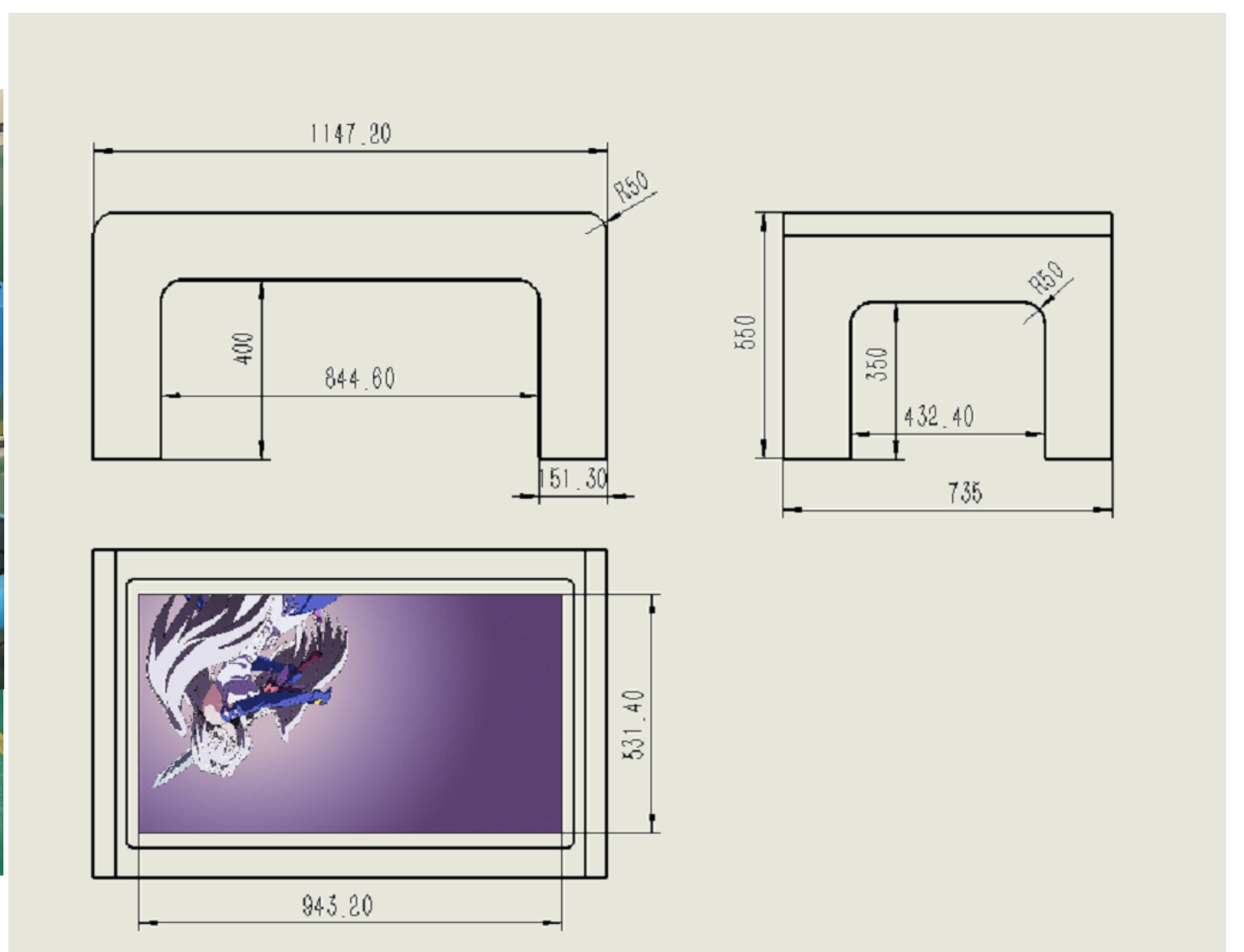
More details



Real picture



Drawing



Specifications**TFT Panel**

Model No.	AVL-TD430
Panel size	43" TFT-LCD
Display area(mm)/mode	943.2(H)*531.4(H)
Maximum resolution	1920*1080
Display color	16.7M
Brightness (nits)	350cd/ m ²
Contrast	3000:1
Visual angle	178°/178°
Response time	2ms
Life(hrs)	>60,000(hrs)
Interface	HDMI, RJ-45, SDI, USB, VGA, WIFI (optional)

Touch

Type	Capacitive touch
Positioning accuracy	±2mms
Transmittance	92%
Hardness	7H
Click manner	10 points
Response time	5ms
Lick life time	>=60M times

System

Operating system	Windows 10, i5 or Android RK3288
RAM	4GB or 2G
SSD	128GB or 8G

Appearance

Color/appearance	Yellow, green, blue, white etc, customized
Case	Metal case SPCC
Dimension(H*W*D)mm	1147.2*735*550
Installation	Freestanding

Electricity

Power supply	AC100~240V 50 /60 HZ
Maximum power consumption	75w
Standby power consumption	<5w
Speaker	Yes

Temperature

Working temperature	0°C ~ 50°C
Storage temperature	-10°C~60°C
Working humidity	20%~80%
Storage humidity	5%~95%

Detailed functions

Video Format	MPEG1/MPEG2/MPEG4/DIVX/ASP/WMV/AVI
Audio Format	WAVE/MP3/WMA/AAC
Image Format	JPEG/BMP/TIFF/PNG/GIF
Image Resolution	480P/720P/1080P

Information

Terms	Unit Price (EXW Shenzhen)
Unit price	
Sample lead time	12~15 working days for current sample
Payment term	50% deposit, 50% balance before shipment
Warranty	1 year free warranty, lifelong technical support
Price validation	15 Days